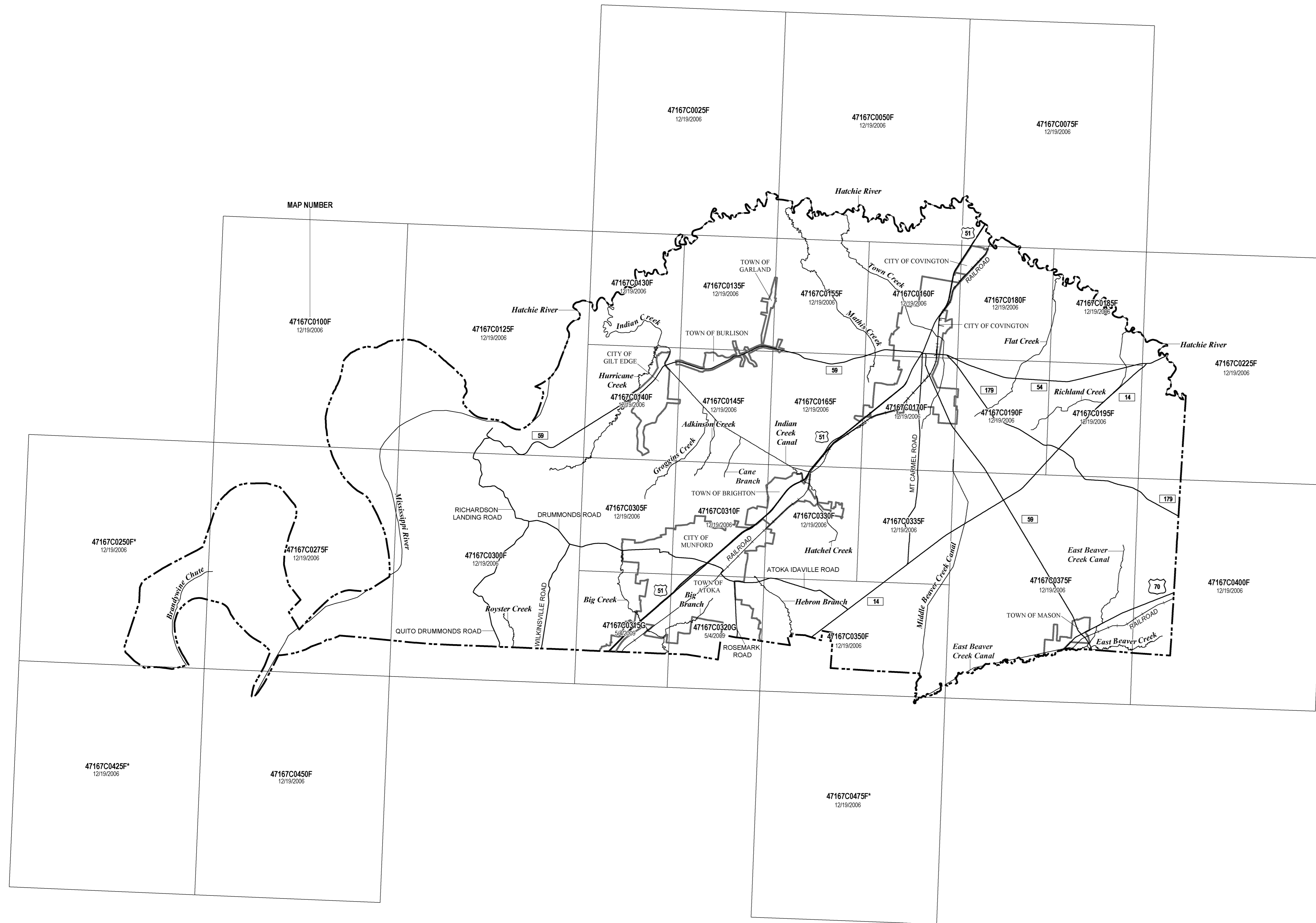


LISTING OF COMMUNITIES					
COMMUNITY NAME	COMMUNITY NUMBER	LOCATED ON PANEL(S)	INITIAL NFIP MAP DATE	INITIAL FIRM DATE	MOST RECENT FIRM PANEL DATE
ATOKA, TOWN OF	470419	310, 315, 320, 330	DECEMBER 19, 2006	DECEMBER 19, 2006	MAY 4, 2009
BRIGHTON, TOWN OF	470188	310, 330	AUGUST 23, 1974	JUNE 17, 1986	DECEMBER 19, 2006
BURLISON, TOWN OF	470373	135, 140, 145	OCTOBER 13, 1978	APRIL 2, 1991	DECEMBER 19, 2006
COVINGTON, CITY OF	470189	160, 165, 170, 180, 190	DECEMBER 3, 1976	MARCH 16, 1987	DECEMBER 19, 2006
GARLAND, TOWN OF	470264	135, 155, 165	NA	NA	DECEMBER 19, 2006
GILT EDGE, CITY OF	470190	140, 145	SEPTEMBER 13, 1974	APRIL 2, 1991	DECEMBER 19, 2006
MASON, TOWN OF	470191	375	OCTOBER 1, 1976	MAY 15, 1986	DECEMBER 19, 2006
MUNFORD, CITY OF	470422	305, 310, 315, 320	DECEMBER 19, 2006	DECEMBER 19, 2006	MAY 4, 2009
TIPTON COUNTY (UNINCORPORATED AREAS)	470340	25, 50, 75, 100, 125, 130, 135, 140, 145, 155, 160, 165, 170, 180, 185, 190, 195, 225, 250, 275, 300, 305, 310, 315, 320, 330, 335, 350, 375, 400, 425, 450, 475*	JULY 3, 1975	APRIL 2, 1991	MAY 4, 2009

*PANEL NOT PRINTED - AREA ALL WITHIN ZONE A



*PANEL NOT PRINTED - AREA ALL WITHIN ZONE A

MAP REPOSITORIES

(Maps available for reference only, not for distribution.)

ATOKA, TOWN OF
ATOKA TOWN HALL
334 ATOKA-MUNFORD AVENUE
ATOKA, TENNESSEE 38004

BRIGHTON, TOWN OF
BRIGHTON TOWN HALL
139 NORTH MAIN STREET
BRIGHTON, TENNESSEE 38011

BURLISON, TOWN OF
BURLISON TOWN HALL
7432 HIGHWAY 59 NORTH
BURLISON, TENNESSEE 38015

COVINGTON, CITY OF
COVINGTON CITY HALL
DEPT OF DEVELOPMENTAL SERVICES
200 WEST WASHINGTON AVENUE
COVINGTON, TENNESSEE 38019

GILT EDGE, CITY OF
GILT EDGE CITY HALL
9149 MUNFORD-GILTEDGE ROAD
BURLISON, TENNESSEE 38015

MASON, TOWN OF
MASON CITY HALL
12162 MAIN STREET
MASON, TENNESSEE 38049

MUNFORD, CITY OF
MUNFORD CITY HALL
1397 MUNFORD AVENUE
MUNFORD, TENNESSEE 38058

TIPTON COUNTY (UNINCORPORATED AREAS)
TIPTON COUNTY COURTHOUSE
1 LIBERTY AVENUE
COVINGTON, TENNESSEE 38019

MAP DATES

This FIRM index displays the map date for each FIRM panel at the time that this index was printed. Because this index may not be distributed to unaffected communities in subsequent revisions, users may determine the current map date for each FIRM panel by visiting the FEMA Map Service Center website at <http://msc.fema.gov> or by calling the Map Service Center at 1-800-358-9516.

Communities annexing land on adjacent FIRM panels must obtain a current copy of the adjacent panel as well as the current FIRM index. These may be ordered directly from the Map Service Center at the number listed above.

NOTE TO USER

Future revisions to this FIRM index will only be issued to communities that are located on FIRM panels being revised. This FIRM index therefore remains valid for FIRM panels dated 5/4/2009 or earlier. Please refer to the "MOST RECENT FIRM PANEL DATE" column in the Listing of Communities table to determine the most recent FIRM index date for each community.



NATIONAL FLOOD INSURANCE PROGRAM

MAP INDEX

FIRM

FLOOD INSURANCE RATE MAP

TIPTON COUNTY
TENNESSEE
AND INCORPORATED AREAS
(SEE LISTING OF COMMUNITIES TABLE)

MAP INDEX

PANELS PRINTED: 25, 50, 75, 100, 125, 130, 135, 140, 145, 155, 160, 165, 170, 180, 185, 190, 195, 225, 275, 300, 305, 310, 315, 320, 330, 335, 350, 375, 400, 450

MAP NUMBER
47167CIND0B

MAP REVISED
MAY 4, 2009

Federal Emergency Management Agency